

To install CDM drivers for an FTDI device under Windows 7, follow the instructions below:

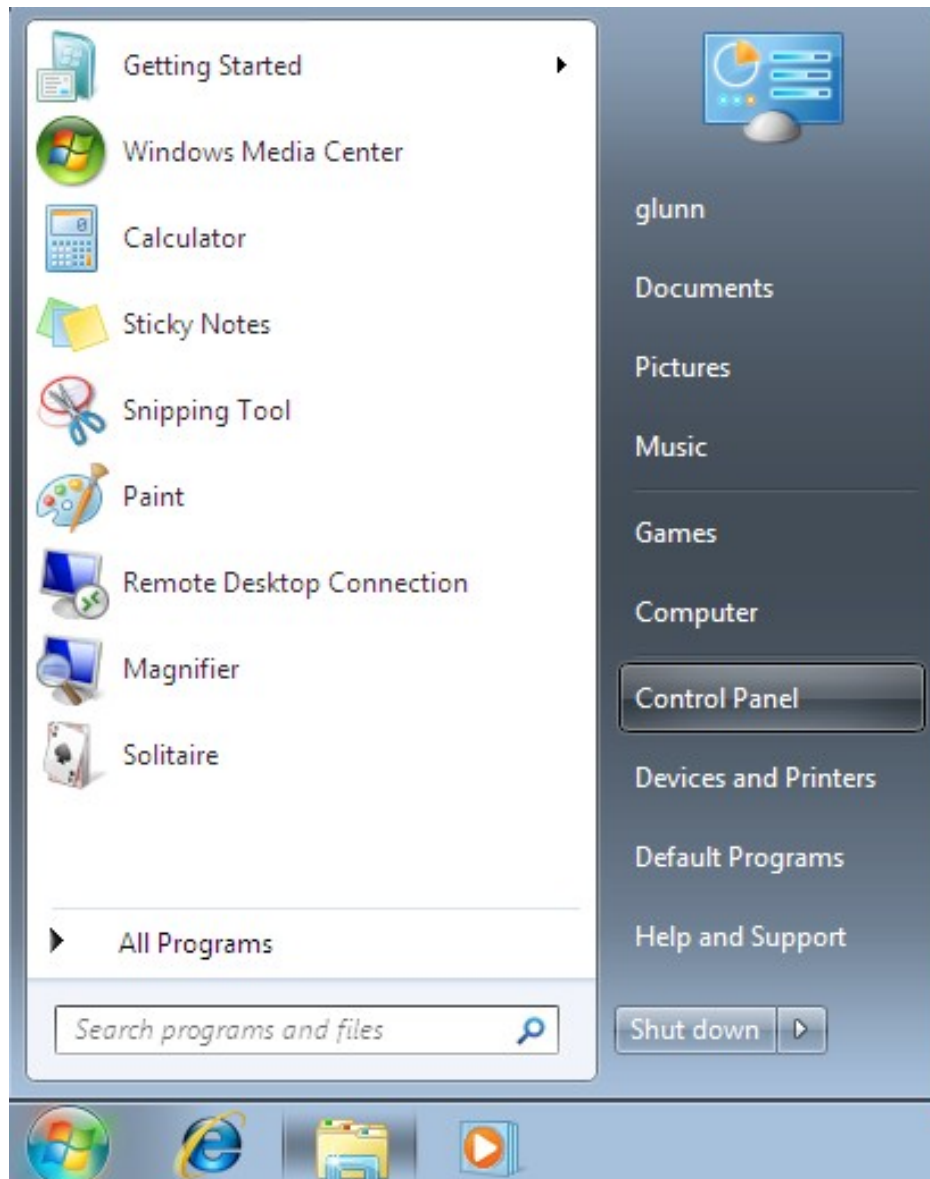
Connect the cradle to a spare USB port on your PC.

If there is an available Internet connection, Windows 7 will silently connect to the Windows Update website and install any suitable driver it finds for the device.

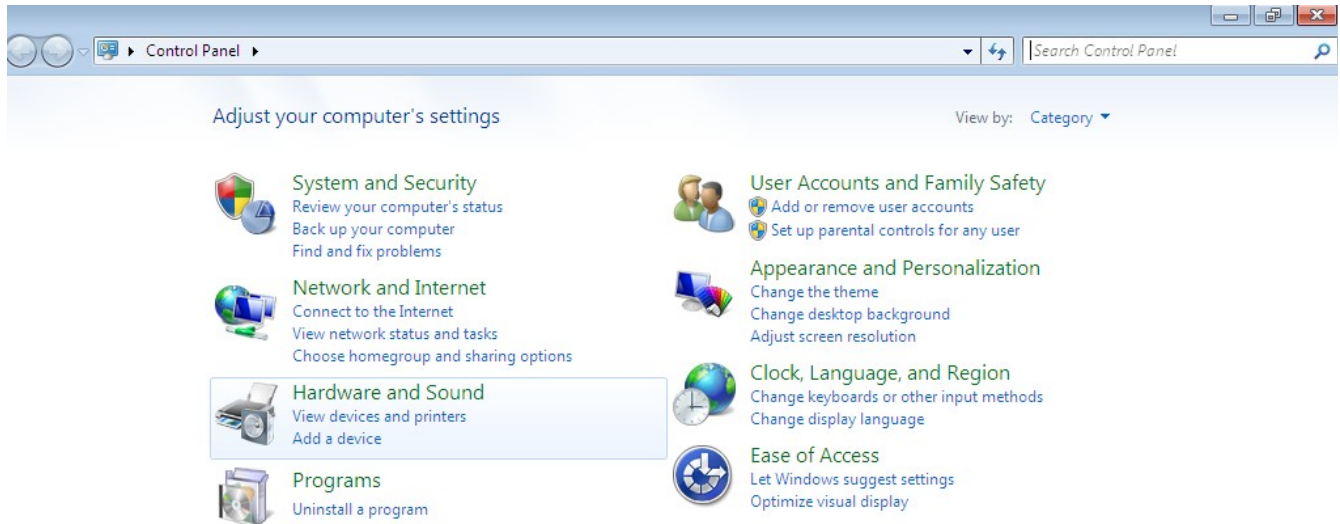
If the automatic installation takes place there is no need to continue with the procedure outlined below.

If no suitable driver is automatically found then the following procedure should be followed.

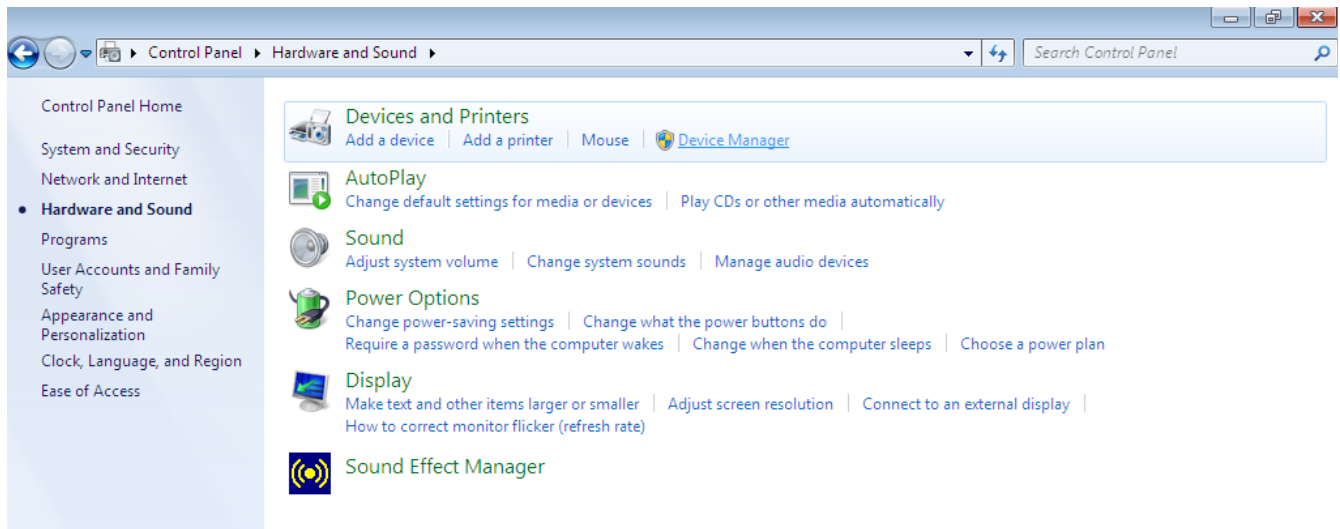
Press the Windows start button to bring up the start menu and select "Control Panel".



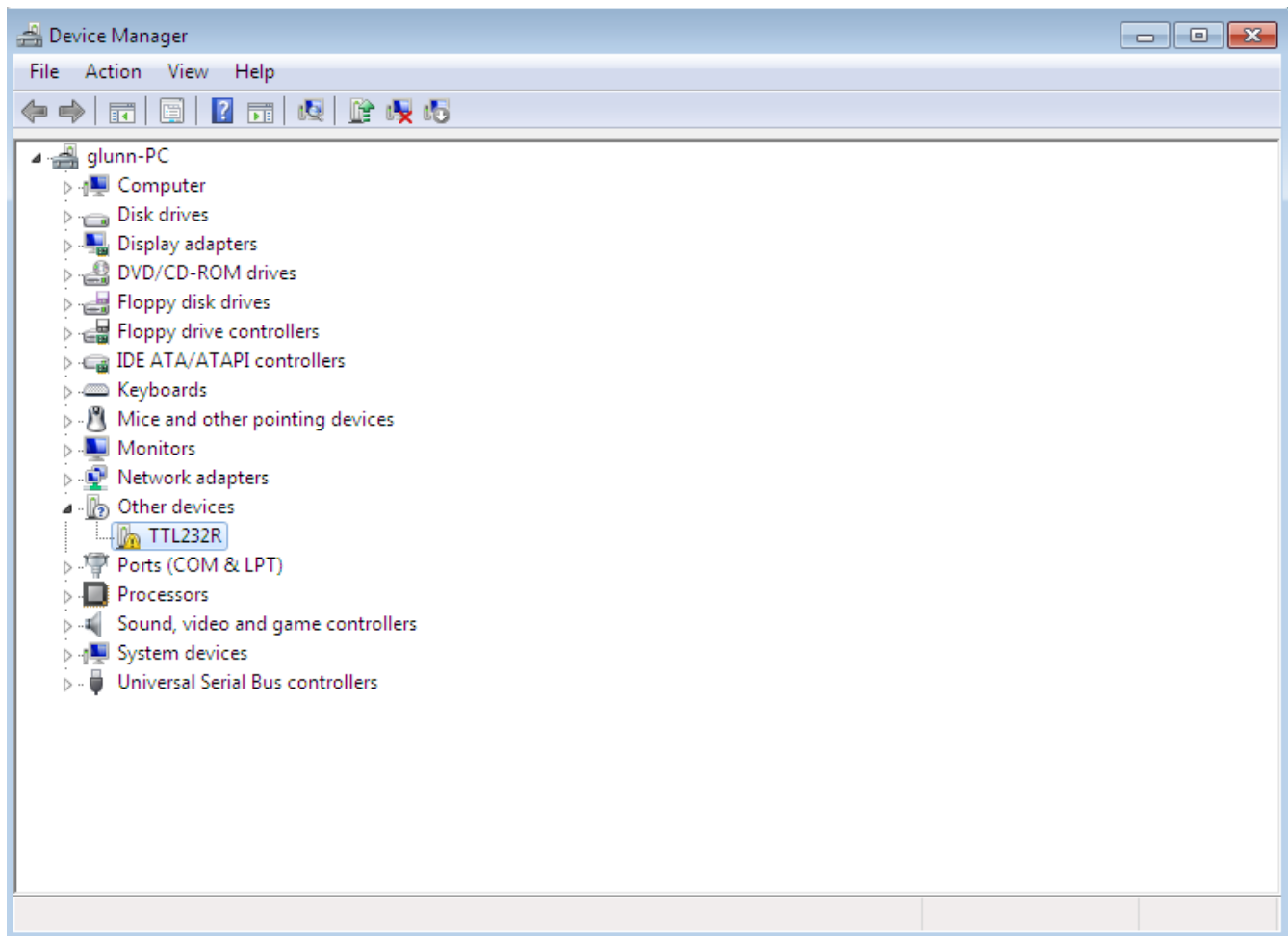
From the Control Panel window select Hardware and Sound



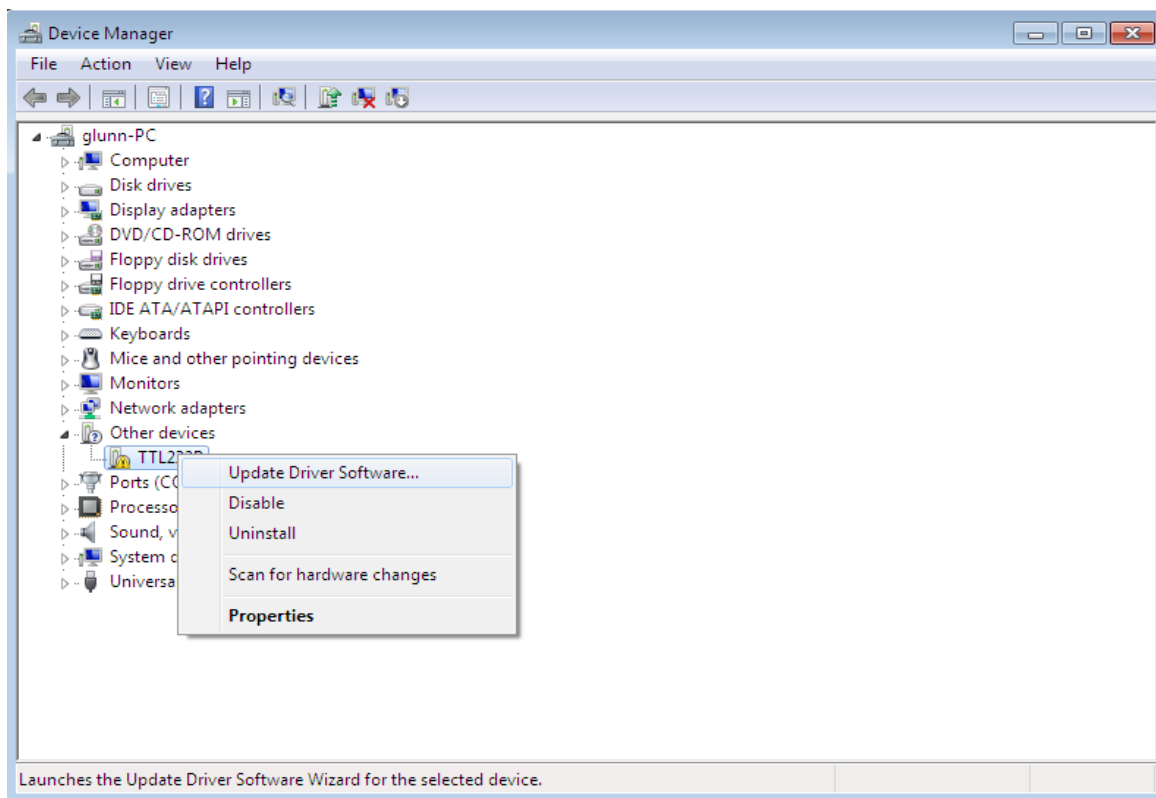
At the next screen select Device Manager:



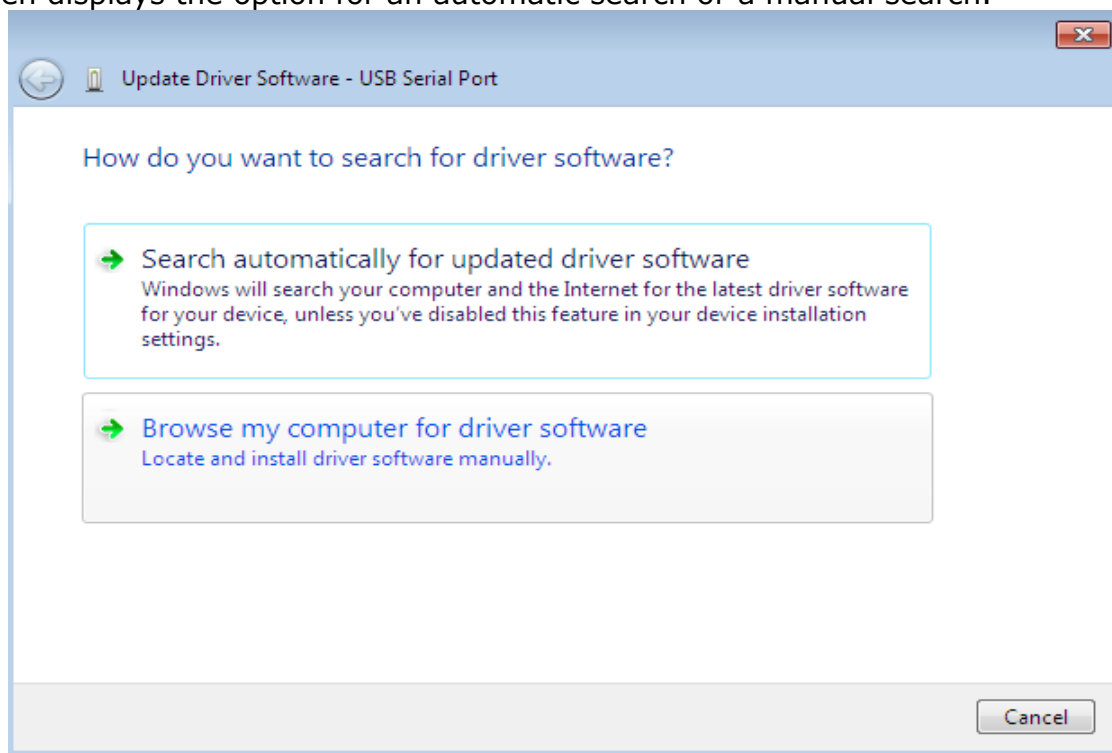
In the Device Manager window there will be a device under Other Devices with a yellow warning symbol to indicate a problem ie no driver installed. The text next to this device will depend on the device attached. In this example the device was a TTL232R device.



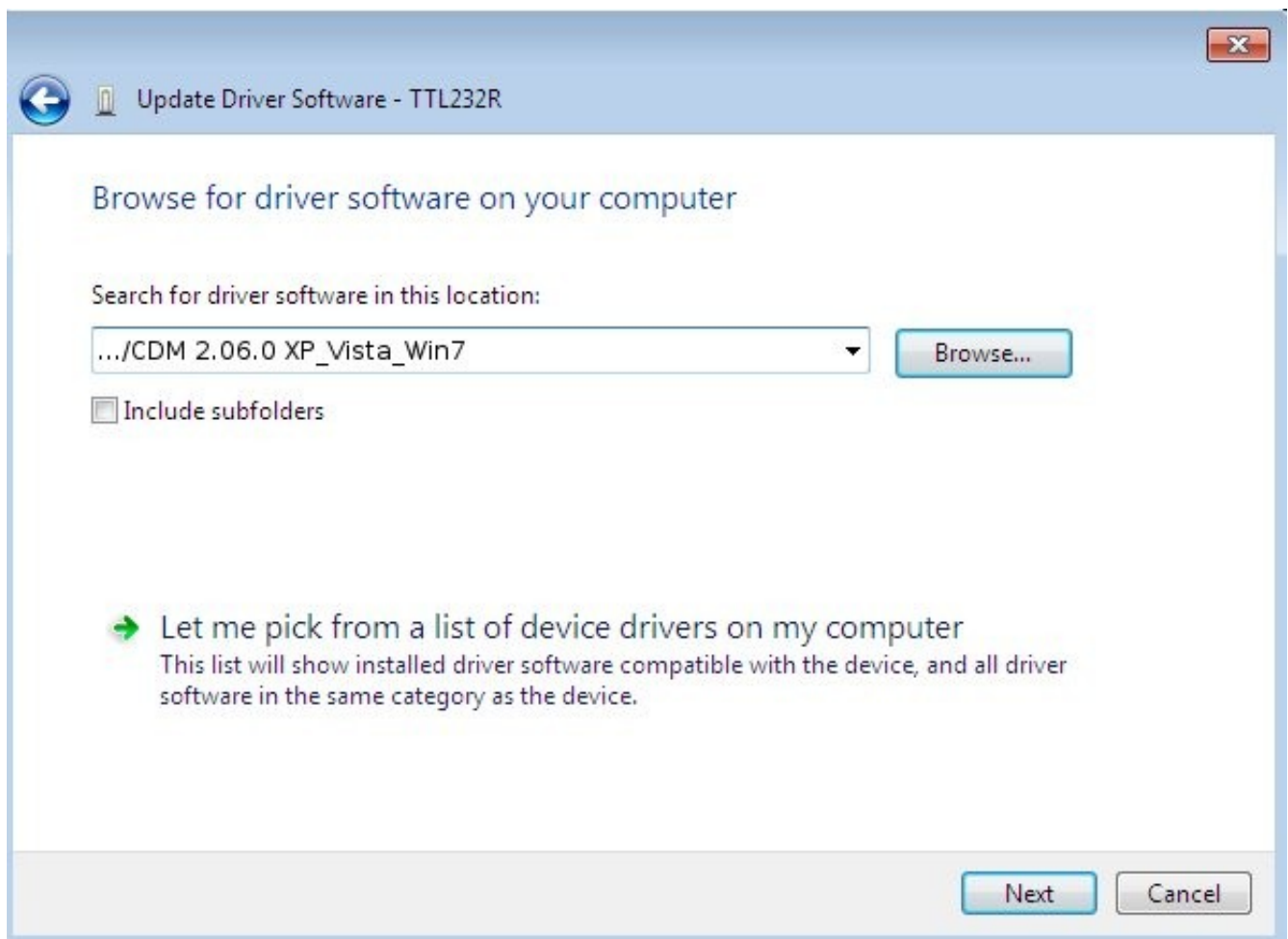
Right click on the other device (TTL232R in this example) to bring up a menu as shown below.



From the displayed menu select "Update Driver Software..."  
This then displays the option for an automatic search or a manual search.

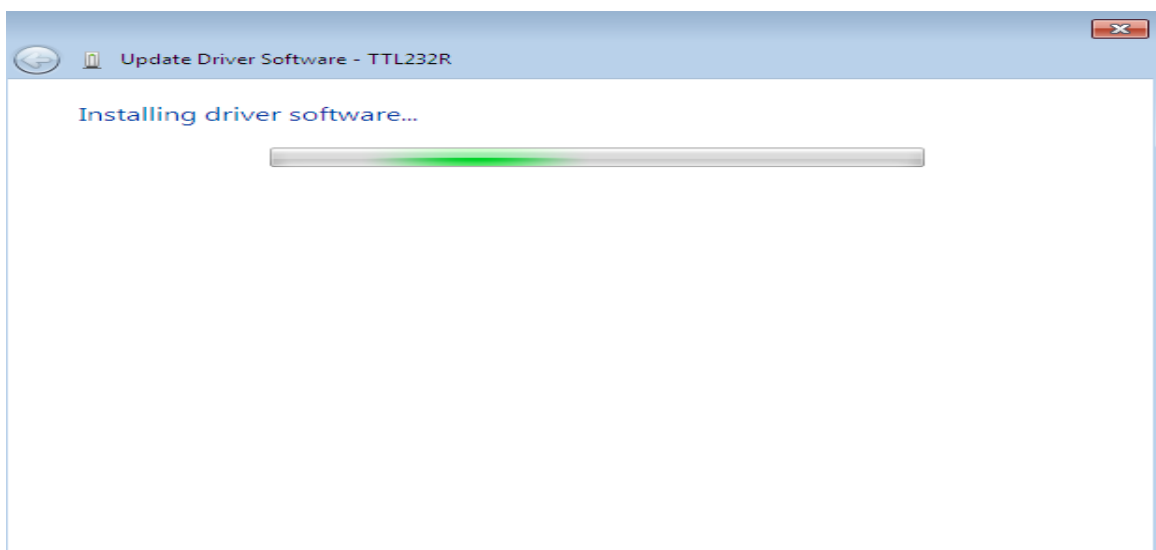


Select the second option to browse manually.  
Page 4

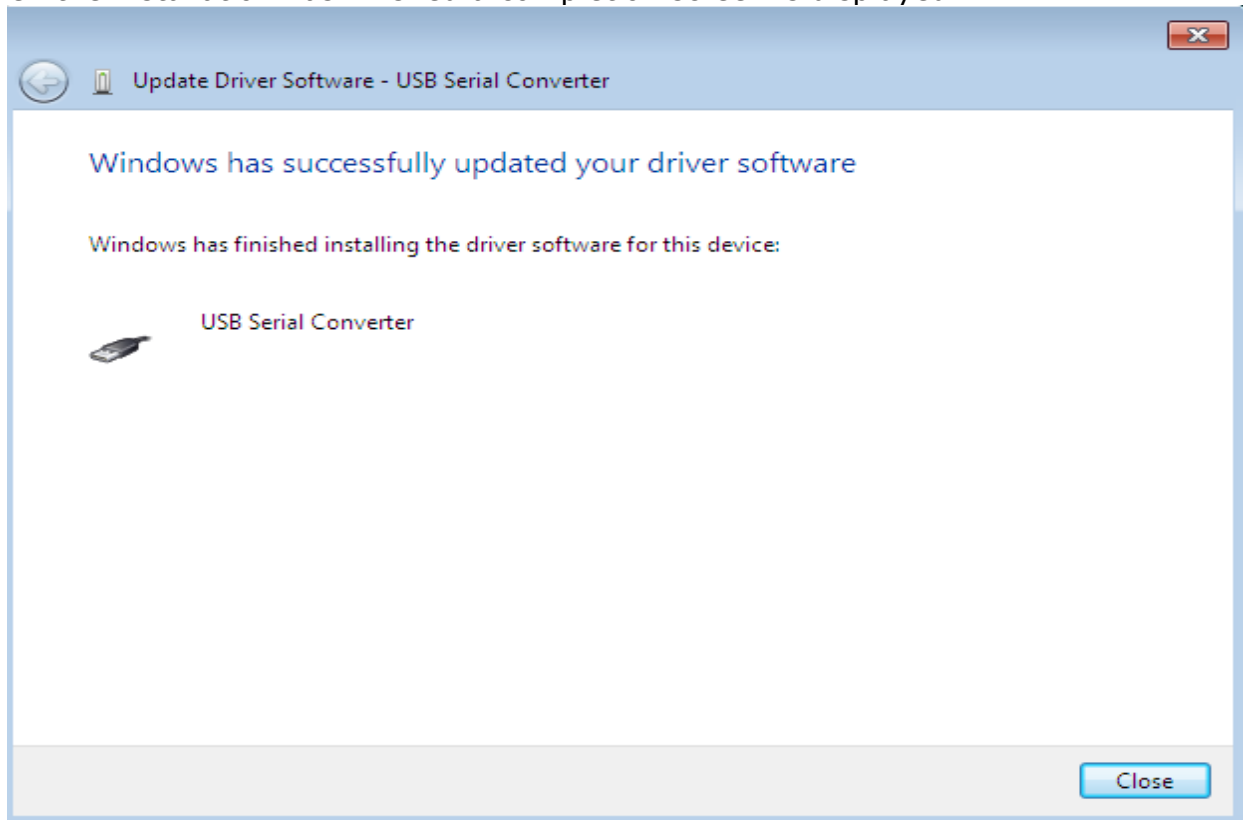


In the address box put the exact location where the drivers have been saved to. This may be on a CD or in a folder on the PC. It is not necessarily the exact same location as shown in the screenshot. The drivers could have been saved anywhere of the users choosing.

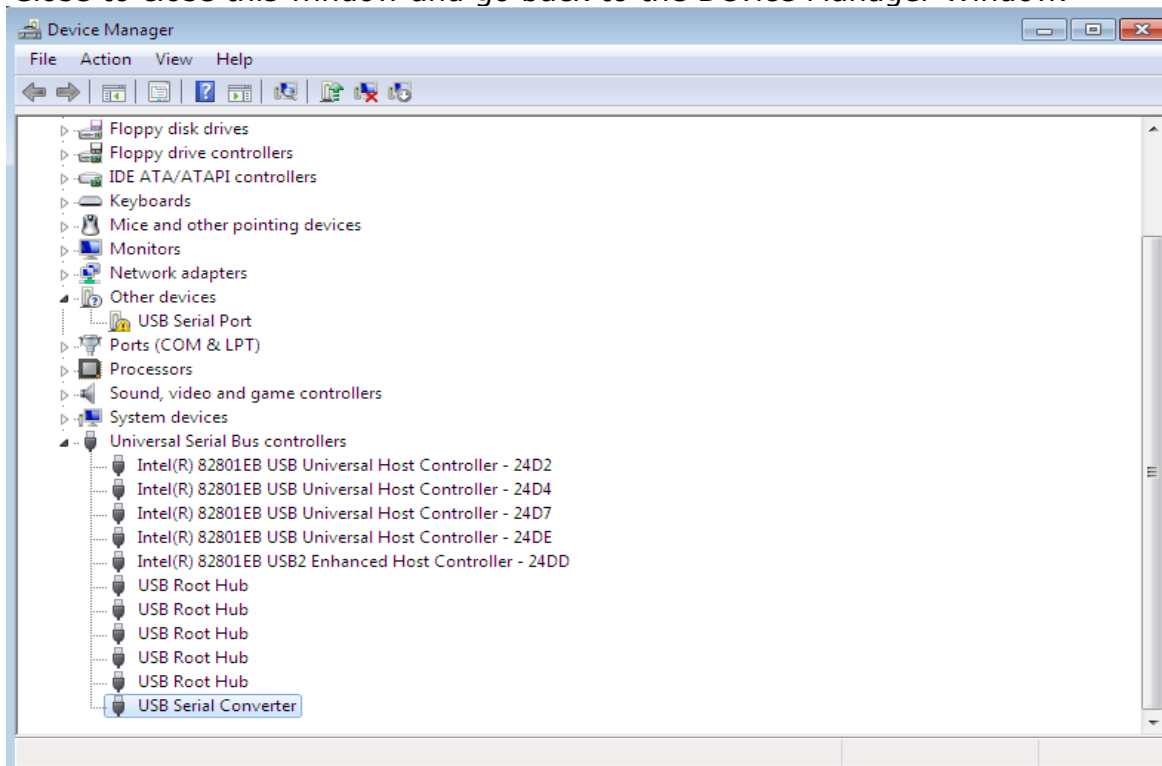
After entering the address select "NEXT" to start the installation.



When the installation has finished a completion screen is displayed.

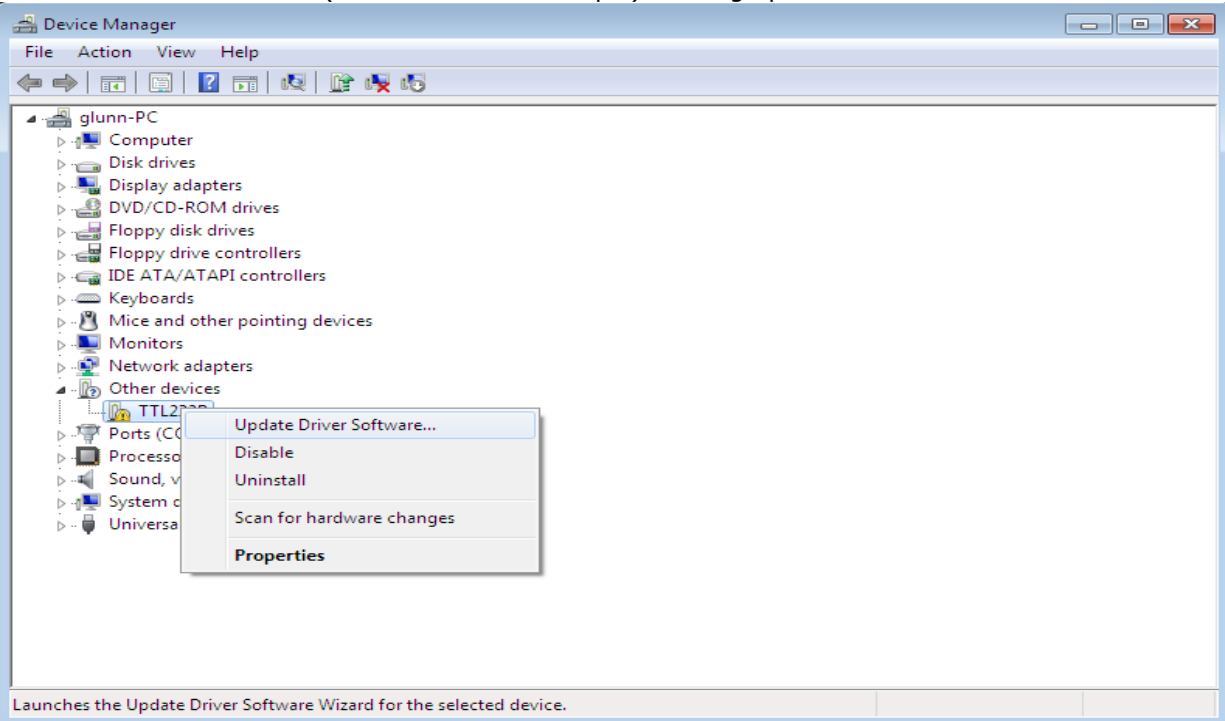


Press Close to close this window and go back to the Device Manager Window.



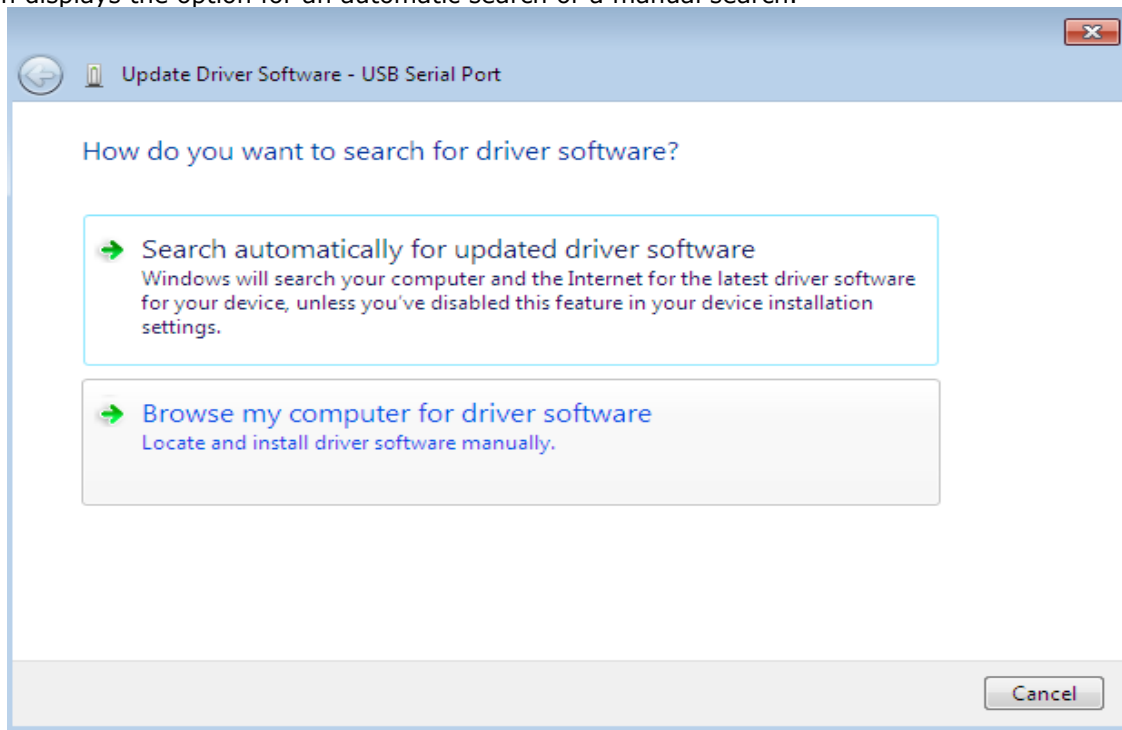
The Device Manager will still show a device under Other Devices but in addition to this there is a new entry under Universal Serial Bus Controllers indicated in the screenshot above as the USB Serial Converter. This indicates the bus layer of the driver is installed. Installing the Virtual Com Port layer of the driver is almost a repeat of the last few steps.

Right click on the other device (TTL232R in this example) to bring up a menu as shown below.



From the displayed menu select "Update Driver Software..."

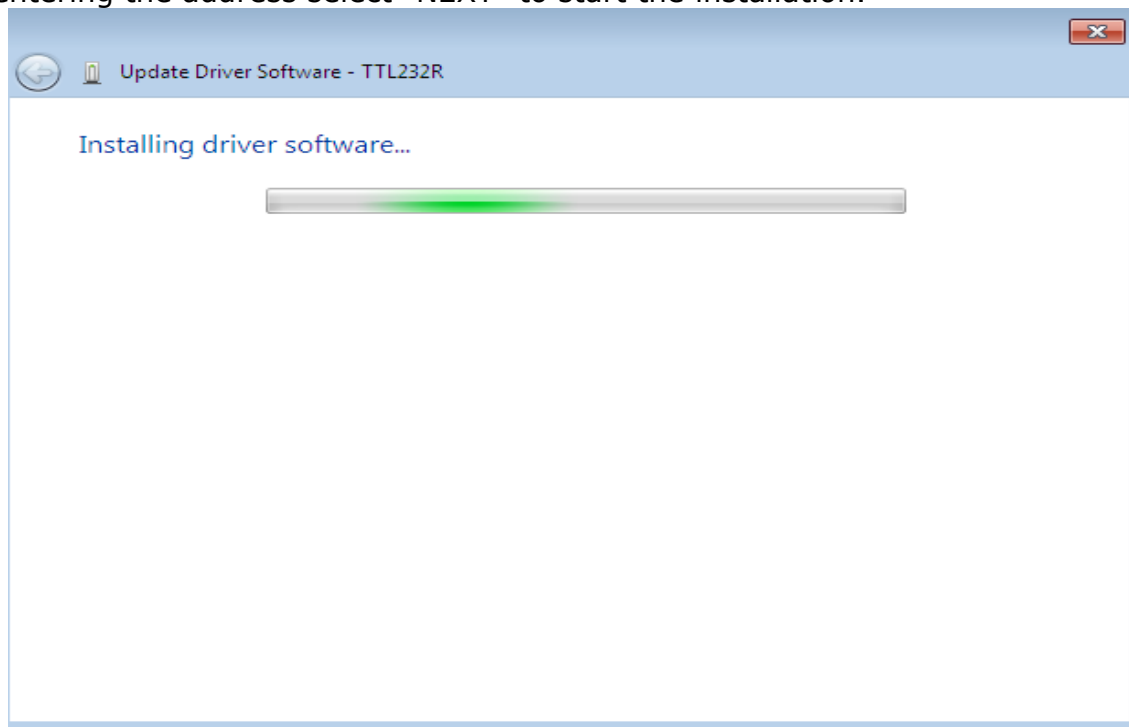
This then displays the option for an automatic search or a manual search.



Select the second option to browse manually.

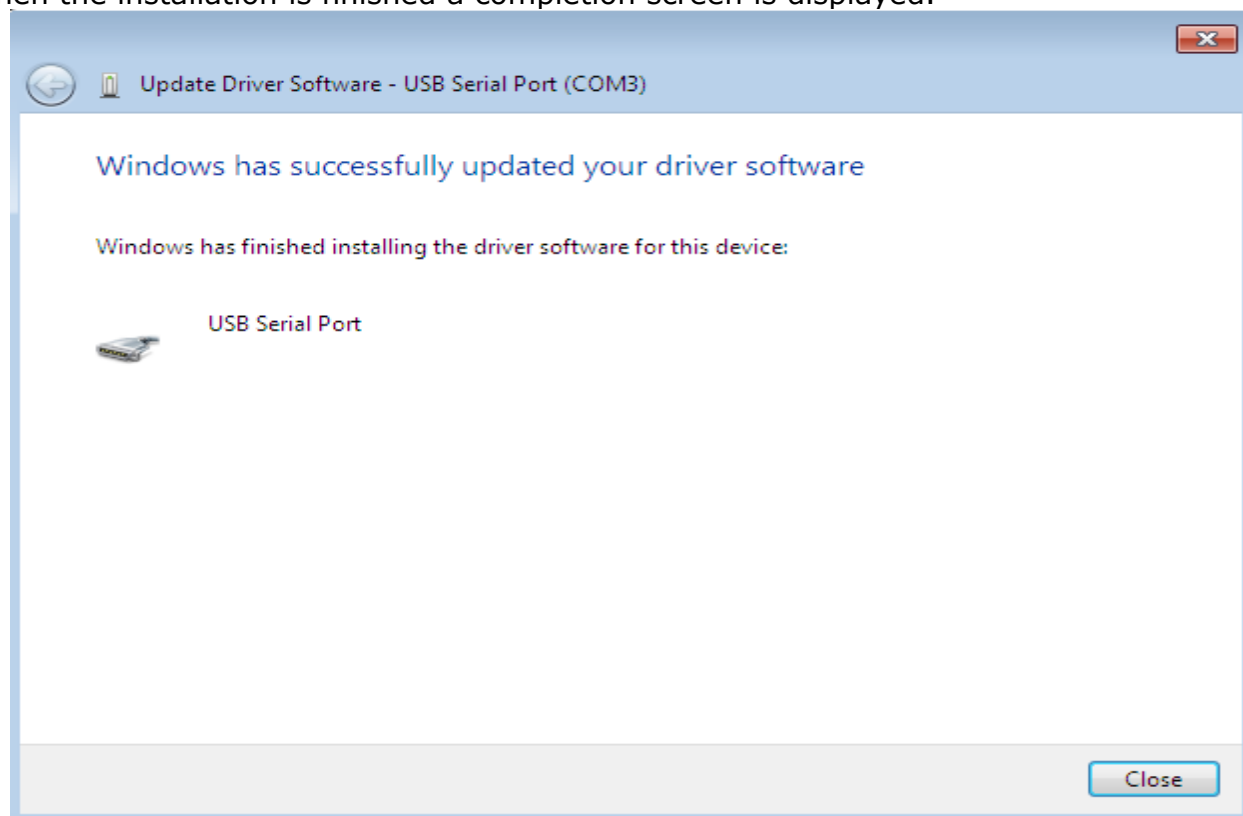


In the address box put the exact location where the drivers have been saved to. This may be on a CD or in a folder on the PC. It is not necessarily the exact same location as shown in the screenshot. The drivers could have been saved anywhere of the users choosing. After entering the address select "NEXT" to start the installation.

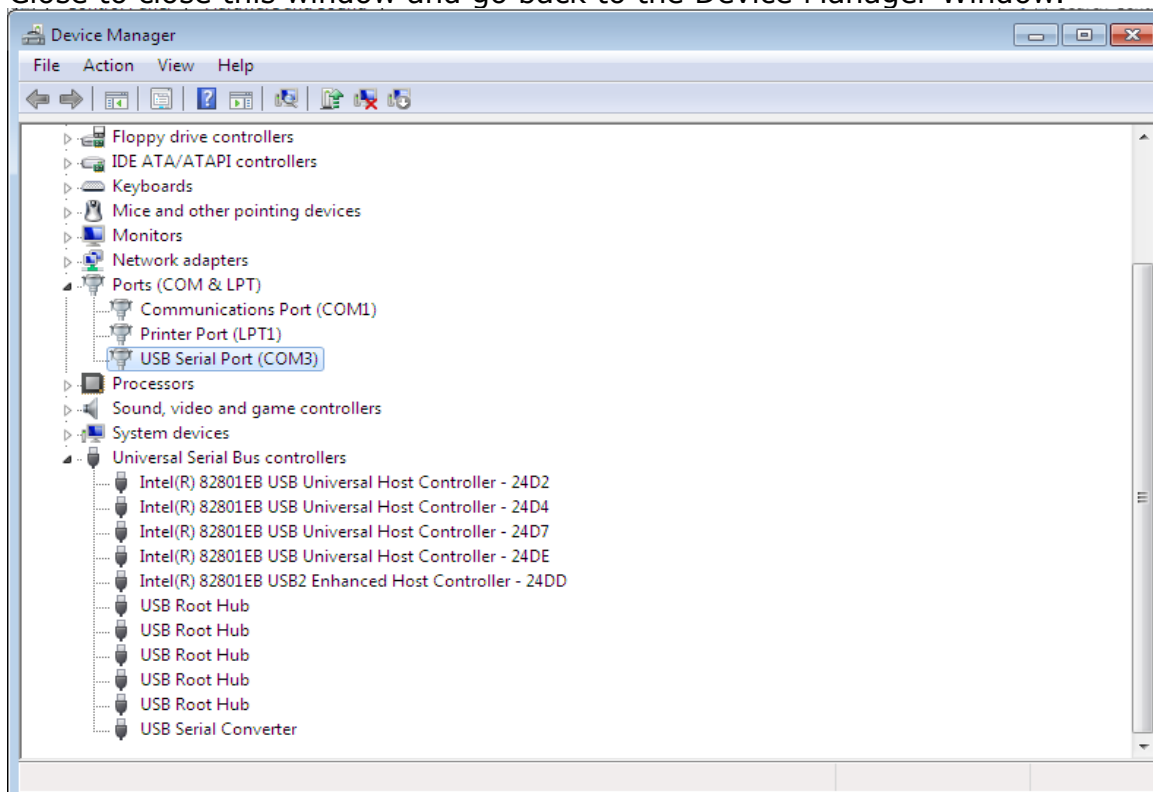




When the installation is finished a completion screen is displayed.



Note this screen also displays the COM port assigned to the device.  
Press Close to close this window and go back to the Device Manager Window.



This time the Device Manager does not have a TTL232R entry under Other Devices but does show entries under Universal Serial Bus Controllers and Ports (COM & LPT).

The above screen shot displays a correct installation.

The device is now ready to use on COM3.

NOTE: Not all devices will install to COM3. The COM port allocation is determined by the installation wizard on the basis of the next free com port as designated in the PC registry.